

[Simplified Adjustments] XY-Axis, Feed Screw, Key Guide Units

[Standard] XY-Axis Dovetail Slide, Feed Screw

[High Precision] XY-Axis Dovetail Slide, Feed Screw Square / Extended Knob (Lead 4.2mm)

Features: Have the top and bottom surfaces clamped with screws. Has a very low profile (height: 16mm) and thus, are suitable for adjustment on limited spaces.

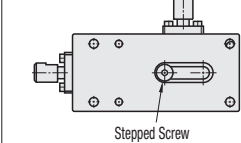
XY-Axis, Low Profile



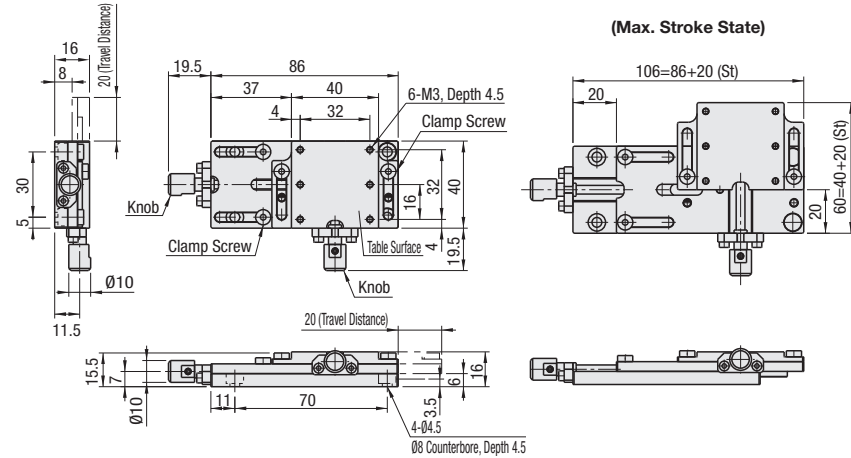
X-Axis: P.1895

One Point
A stepped screw is mounted onto the back face to prevent the table from being pulled up.

Bottom View



XYKYF40



Main Body		Feed Screw		Clamp Screw	
Material	Surface Treatment	Material	Surface Treatment	Material	Surface Treatment
Aluminum Alloy	Black Anodize	Steel	Electroless Nickel Plating	Steel	Black Oxide

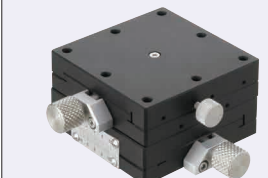
Part Number	Table Surface Size (mm)	Travel Distance (mm)	Travel per Rotation (mm)	Clamp Screw	Load Capacity (N)	Weight (kg)	Unit Price
XYKYF 40	40x40	20	0.7	M4	19.6	0.15	

Ordering Example
Part Number: XYKYF40

Points on Similar Product Comparison | Travel Accuracy (Straightness) 50µm

P.1933

XY-Axis

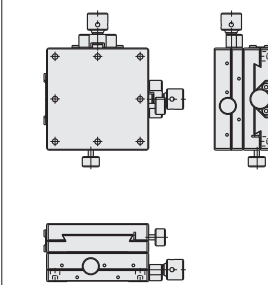


X-Axis: P.1896

Z-Axis: P.1961

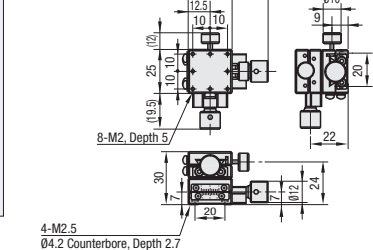


Clamp Position Change
XYFES□-R (Right/Left Reversed)

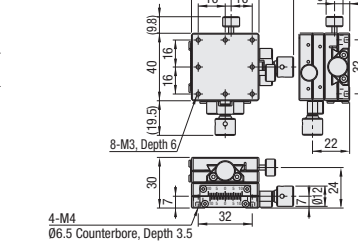


See the CAD data for details.

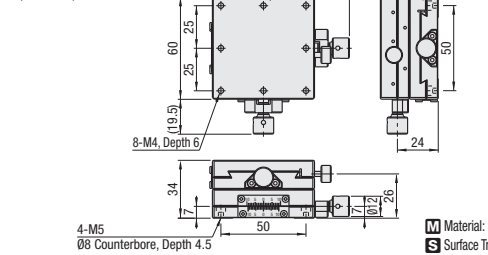
XYFES25 (Standard)



XYFES40 (Standard)



XYFES60 (Standard)



Material: Aluminum Alloy
Surface Treatment: Black Anodize

XY-Axis Stages High Precision Stage Existing Product: XYEG (P.1933)

Type	Part Number	Clamp Position	Stage Surface (mm)	Travel Distance (mm)	Travel per Rotation (mm)	Load Capacity (N)	Travel Accuracy Straightness	Weight (kg)	Unit Price
XYFES	25	No Symbol (Standard)	25x25	±5	0.5	27.4	50µm	0.09	
	40	R (Right/Left Reversed)	40x40	±7				0.16	
	60		60x60	±8				0.36	

Resolution (Vernier Scale Indication): 0.1mm/division

Extension Cover HDEXT12-□ (sold separately): Ø12 knobs can be extended by installing the cover. P.2004

(Caution) Please note that increased knob diameter may interfere with the stage mounting base surfaces.

Ordering Example
Part Number: XYFES40

XY-Axis, Square (Dowel Holes, Lead 4.2mm)



X-Axis: P.1899

Z-Axis: P.1959

Standard Stages with Similar Specifications: Combination of XFHT (P.1896)

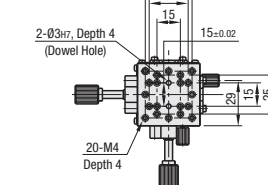
Part Number	Type	No.	Stage Surface (mm)	Travel Distance (mm)	Travel per Rotation (mm)	Load Capacity (N)	Travel Accuracy Straightness (µm)	Weight (kg)	Accessory (4 pcs.) Type M-L	Unit Price
XYSC	40	40	40x40	±11	4.2	14.7	20	0.20	SCB4-5	
		60	60x60	±21	24.5	30	0.38			

Resolution (Vernier Scale Indication): 0.1mm/division

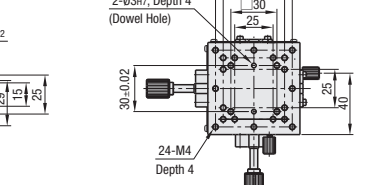
Extension Cover HDEXT12 (Sold Separately): Ø12 feed screw knob can be extended. P.2004

Ordering Example
Part Number: XYSC60

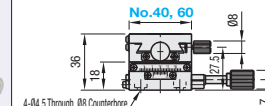
XYSC40



XYSC60



Common to XYSC40 and 60



Material: Aluminum Alloy
Surface Treatment: Black Anodize

Features: Effective when feed knobs are difficult to turn due to the carriage mounted objects interfere, or when the knobs are hard to reach since the stage is deeply embedded inside a machine.

XY-Axis, Extended Knob (Dowel Holes, Lead 4.2mm)



X-Axis: P.1899

Z-Axis: P.1960

For Knob Extension Method, see P.1905 and P.1899.

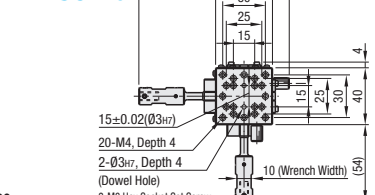
Standard Stages with Similar Specifications: Combination of XFHT (P.1896)

Part Number	Type	No.	Stage Surface (mm)	Travel Distance (mm)	Travel per Rotation (mm)	Load Capacity (N)	Travel Accuracy Straightness (µm)	Weight (kg)	Accessory (4 pcs.) Type M-L	Unit Price
XYSCL	40	40	40x40	±11	4.2	18.6	30	0.21	SCB4-6	
		60	60x60	±21	17.7	30	0.39			

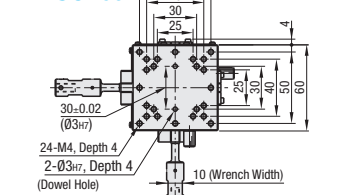
Resolution (Vernier Scale Indication): 0.1mm/division

Ordering Example
Part Number: XYSCL40

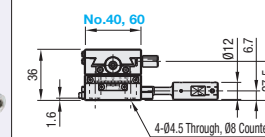
XYSCL40



XYSCL60



Common to XYSCL40 and 60



Material: (Main Body) Aluminum Alloy
Surface Treatment: Black Anodize
(Feed Knob) Low Cadmium Brass

Alteration	Knob Position Change (Left/Right Reversed)
Spec.	
Code	R

See the CAD data for details.